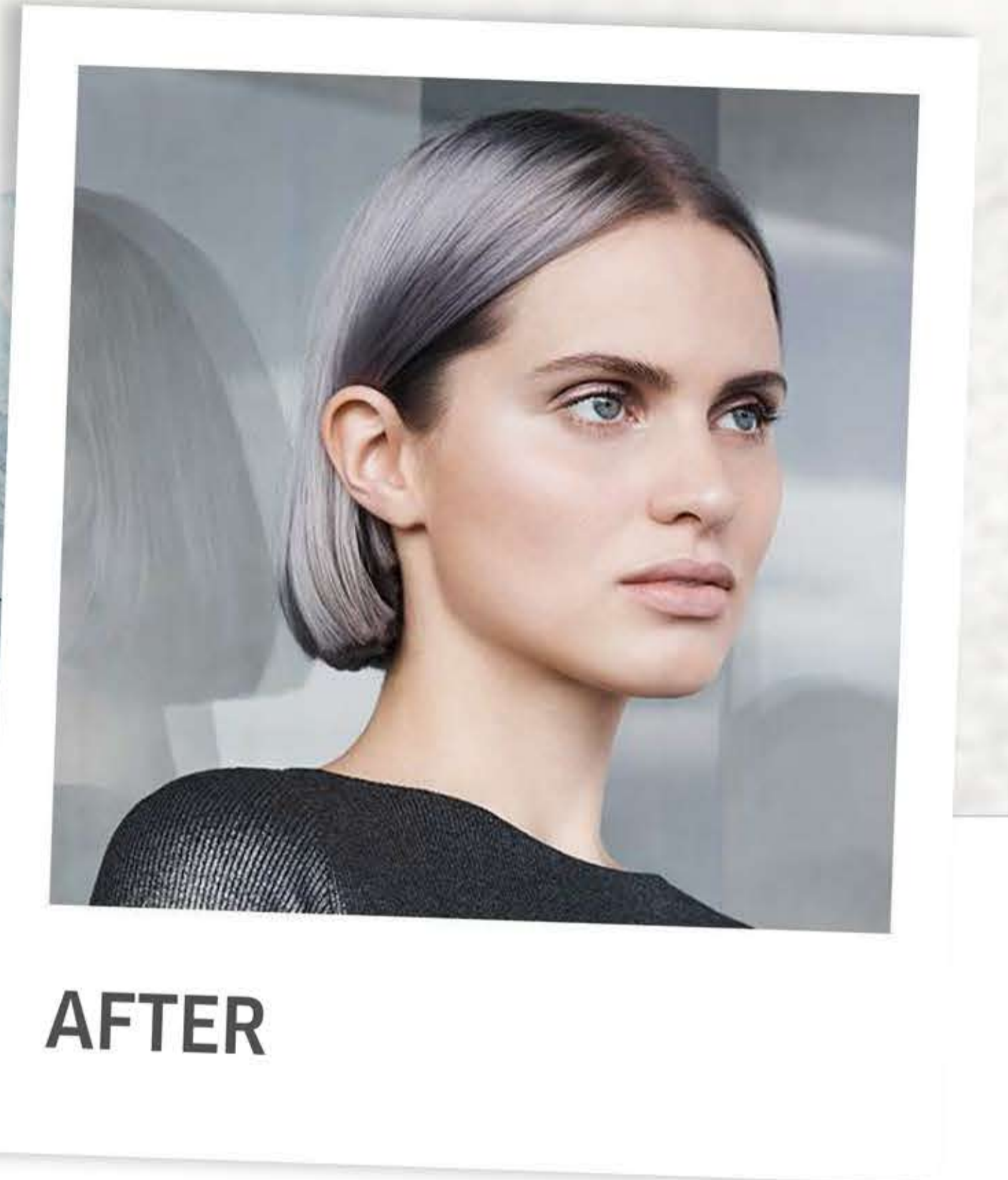




By Nicola Clarke and Renya Xydis  
 @nicolaclarkecolour and @renyaxydis



BEFORE



AFTER

# FORMULA

30g

45g  
6%

6g



LIGHTEN

50g  
10/69

10g  
5/81

120g  
1.9%

12g



ROOTS AND ENDS

55g  
9/60

5g  
6/16

120g  
1.9%

12g



MID LENGTHS



**TIP**  
 Use **Eimi Perfect Setting**  
 and **Eimi Perfect Me**  
 to enhance the smooth  
 surface of the hair and  
 give a polished finish.